



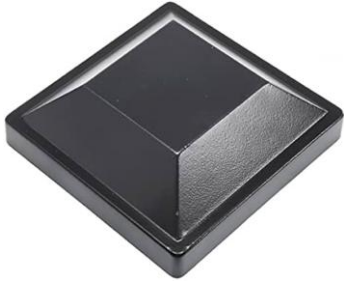
Permanent barrier fixture

## Posts

The aluminum post sizes used are either 3 x 3, 4 x 4 or 6 x 6. The installed height is variable to the customers requirements, however, the depth size of the required barrier in the main dictates the minimum post dimensions. The facing side of the pole is fitted with a waterproof silicone foam pad.

## Post Caps

There are 3 cap options as below. Alternatives may be used as requested, if available and viable.



\*Image for example illustration purpose only

## Colors

The posts and ancillaries are supplied in two off-the-shelf colors – black/bronze or white. Alternative colors are available at an addition cost.

## Fixing points

The posts are secured in place using an internal ground anchor, as illustrated below. They are then further reinforced and sealed against the property's wall using concrete anchor bolts, which are installed from inside the aluminum post. No bolts or screws are visible from the external viewpoint of the post.



# XERO/FLOOD

Removable barrier fixture

## Colors

The brackets are supplied in raw aluminum, no color.



## Drop-in Anchors

Multiple permanent drop-in anchor fixing points are installed on either side of the required opening. These drop-in anchors are permanent and cannot be removed.

## Brackets

The brackets are made of reinforced aluminum and are available in 4x4 or 6x6 dimensions. The installed height varies according to the height of the barrier unit.

The wall- and floor-facing sides of the bracket are fitted with a waterproof silicone foam pad.



\*Image for example illustration purpose only



\*Image for example illustration purpose only

## Anchor Caps

When not in use, the anchor points are fully covered to protect against debris contamination using anchor caps. Although these caps are more aesthetically pleasing than an open hole or a protruding bolt, such as hurricane shutter fix points, it should be noted that they remain permanently visible to varying degrees.



# XEROFLOOD

Removable hardware

## Straps

Utilized for large opening to further secure the XeroFlood unit, partnered with either drop-in anchors or surface mounted hooks.



## 'D' Hooks

Multiple permanent 'D' anchor fixing points are installed on either side of the XeroFlood opening. While the straps are removable, this specific hook is permanent and cannot be detached. Alternatively, it can be replaced with drop-in anchors (see page 2) and anchor caps (see page 2).



## Ratchet Bar

The ratchet is the most commonly used alternative to straps. Although more expensive, it performs the same function as the straps but without requiring permanent fixing points.



\*Image for example illustration purpose only